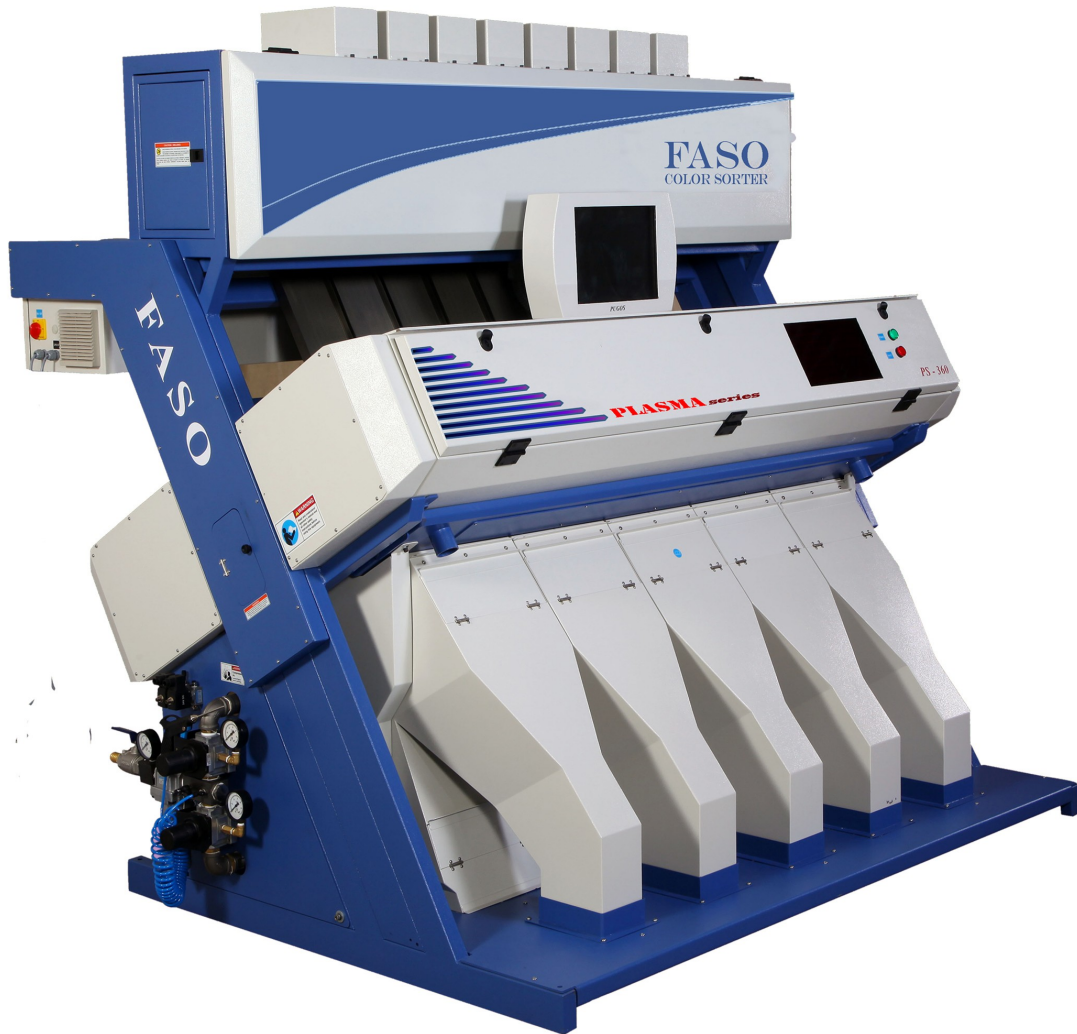


FASO
color sorter

PLASMA Series



The Ultimate Sorting Machine

Specification

Model Number	Channels			Size LxWxH (mm)	Capacity (Tons/hour)*	Power consumption (kw)	Air Consumption (hp)*	Operating Voltage (Volts)
	Primary	Resort1	Resort2					
Plasma series PS - 270	180	60	30	2725x1967x1432	2.2 to 3.8	5 kw	25 hp	230Vac, 50-60Hz
PS - 300	180	90	30	2725x1967x1432	2.7 to 4.5	5 kw	25 hp	230Vac, 50-60Hz
PS - 330	180	90	60	2725x1967x1432	3.2 to 5.2	6 kw	30 hp	230Vac, 50-60Hz
PS - 360	210	90	60	2725x1967x1432	3.6 to 6.0	6 kw	30 hp	230Vac, 50-60Hz

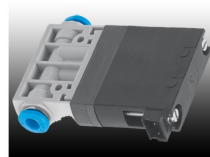
*Capacity will vary depends upon the variety, quality and the impurity level of input material

**Air requirement will be higher if the contamination level is high

Technology



2048 pixel Ultra high resolution line scan cameras can detect defects down to 0.14mm size



1msec of high speed ejectors can eject up to 1000 times per second which maximize the production capacity and reduce good mix-up in reject material



Intelligent image processing algorithm enhances the sorting efficiency



Computer based system monitoring gives consistent sorting even during variations in external parameters like lighting



High performance FPGA and DSP gives the extremely reliable hardware architecture



15" Ultra high resolution color touch screen with user friendly GUI makes the user interface simple

Sorted Samples

	<i>INPUT</i>	<i>ACCEPT</i>	<i>REJECT</i>
<i>Raw Rice</i>			
<i>Boiled Rice</i>			
<i>Rose Rice</i>			
<i>Basmati Rice</i>			



LED lighting system which has a high and long working durability.

Head Office & Factory:

PUGOS TECHNOLOGIES

No.1/135, B S Nagar, Near RVS Kumaran Kottam, Trichy Main Road, Coimbatore - 641402

Tamilnadu, INDIA. Tele / Fax:0422 -2680500 Mobile:9500990978

Email:info@pugotech.com Website : www.pugotech.com